

P.B. Co. 1-98

THIS IS A TRUE COPY OF THE ORIGINAL PLAT OF RECORD OF "ST. LUCIE INLET FARMS" PLAT BOOK 1, PAGE 98, PALM BEACH COUNTY, FLORIDA, NOW MARTIN COUNTY.

Paul A. Stafford
REGISTERED LAND SURVEYOR
FLORIDA CERTIFICATE No. 443

STATE OF FLORIDA }
COUNTY OF PALM BEACH } 55
THIS INSTRUMENT WAS FILED FOR
RECORD THIS 4TH DAY OF January
1911 AND DULY RECORDED ON THE 4TH
DAY OF January 1911 IN BOOK 1 OF PLATS
ON PAGE 98 RECORD VERIFIED -

Arthur J. Stammers, Jr.
CLERK CIRCUIT COURT
BY Paul C. Penno
DEPUTY CLERK

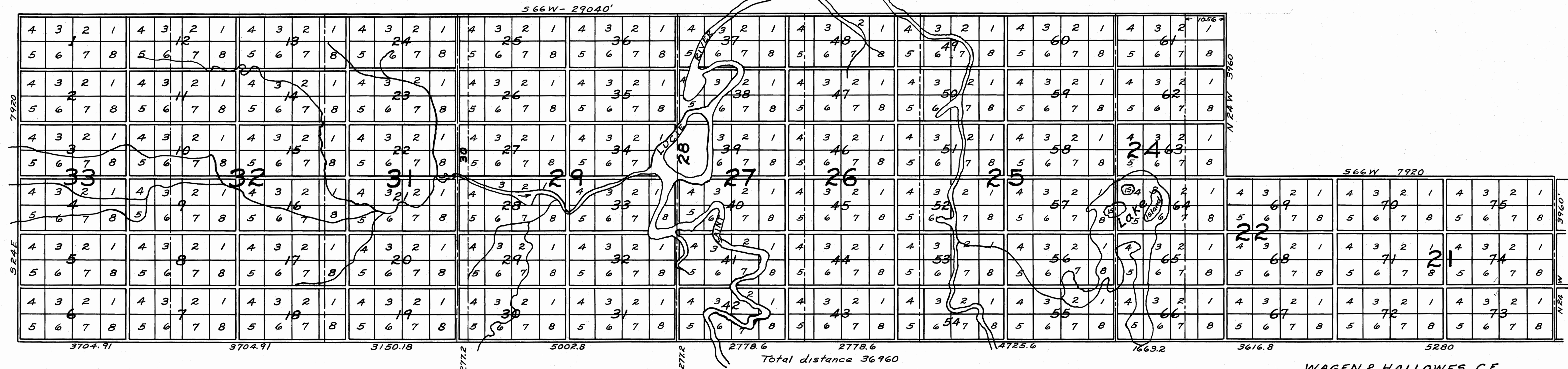
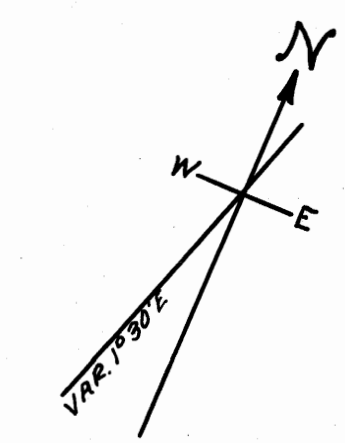
SAINT LUCIE INLET FARMS

B. W. MULFORD COMPANY

MINNEAPOLIS MINN.

Scale 1-in=1/4 Mile

NOTE:- THIS PLAT REPRESENTS AND IS MADE IN ACCORDANCE WITH AN ACTUAL SURVEY OF LOTS 21,22,24,25,26,27,28,29,30,31,32,33 OF THE COMMISSIONERS SUBDIVISION OF THE HANSON GRANT, PALM BEACH, FLA. IN TOWNSHIPS 38 & 39S, RANGES 40&41E. 10 ACRE LOTS 660'x660', ROADS 30' WIDE.



WAGEN & HALLOWES C.E.
JACKSONVILLE FLA.
12-5-10

State of Florida }
County of Duval } 55
Personally appeared before me B. W. MULFORD to me known and acknowledged that this plat of the "ST. LUCIE INLET FARMS" is a true and correct plat made from the survey thereof by Wagen & Hallowes C.E. as the same purports to be, that said property is situate in Palm Beach County, Florida, and is located upon the Lots 21,22,24,25,26,27,28,29,30,31,32,33 of the Commissioners Subdivision of the Jno. M. Hanson or Miles Grant - That said plat shows the tracts numbered from one to eight in each block and the blocks numbered from one to seventy five both inclusive as shown on said plat and the large numbers from 21 to 33 both inclusive as there shown designate the numbers of the original Lots according to the Commissioners Subdivision.

Witness my hand and Official Seal this 3rd day of July A.D. 1911
C.L. PECK
NOTARY PUBLIC STATE OF FLORIDA AT LARGE
My Commission Expires APRIL 14, 1914

Copied by
BIDWELL & HOLSTLAW
Under direction of
C.H. RUGGLES
County Engineer

Traced by R.C.F. Checked by G.H.R.